



**Dr. John Comisi** has been in private practice in Ithaca, NY, since 1983. He is a graduate of Northwestern University Dental School and received his Bachelor of Science in Biology at Fordham University. Dr. Comisi has lectured nationally and internationally and has contributed to the dental literature. He is a member of *Dental Product Shopper's* Editorial Advisory Board and a member of the National Dental Practice-Based Research Network as well as the International and American Association of Dental Research.

*Reprinted with permission from*



# DEEP MOTTLING TREATED WITH DIRECT VENEERS

## CASE PRESENTATION

**A** 17-year-old patient and her mother presented to treat deep mottling of teeth Nos. 8 and 9 (Figures 1 and 2).

We suggested trying to microabrade and then infuse an unfilled resin system (Icon) into the areas to attempt to improve the appearance.

Application of the product components, hydrochloric acid (Figure 3), and then infusion of the tooth (Figure 4) were accomplished as directed by the manufacturer. The results were an improvement; however, the patient, mother, and I were not quite satisfied with the appearance. We then discussed placing cosmetic direct veneers in a minimally invasive procedure using Uvener (distributed by Ultradent). The parent and patient agreed to the procedure.

We first identified the correct size and shape of Uvener to use on the central incisors (Figures 5 and 6), selected the appropriate shade using the VITA Shade system (Vident), then isolated with the Isolite System (Isolite) and cotton rolls for the labial aspect (Figure 7).

After roughening up the facials of both incisors with a medium grit diamond to remove some of the infused resin, we placed ALL-BOND UNIVERSAL (BISCO) on those areas of teeth Nos. 8 and 9, as directed.

BEAUTIFIL II (Shofu) composite material was placed first on one tooth to mask the mottled area and cover the coronal portion of the tooth, then a small amount of BEAUTIFIL Flow Plus 03 (Shofu) was added to the Uvener template. The template was then pressed onto the tooth (Figure 8) and aligned with the long axis of the tooth, using the demarcation that runs gingival-incisal on the Uvener template. Excess material expressed from the margins of the template were cleared and then the material was cured through the Uvener, maintaining steady pressure on the tooth and keeping the template aligned in the proper orientation. The Uvener template was popped off (Figure 9) and the area inspected. The next central incisor procedure was performed the same way.

After curing both veneers, trimming and polishing of the new restorations was accomplished using medium and fine carbide composite trimming burs, Super Snap XTreme (Shofu) polishing discs and OneGloss polishers (Shofu). An excellent final result was achieved (Figure 10).

Having these tools in my dental “bag of tricks” makes my day-to-day practice easier and more fun.

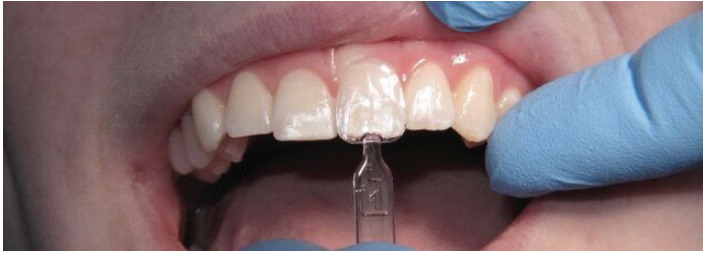


**Figures 1 and 2**—A 17-year-old patient presented with deep mottling on teeth Nos. 8 and 9. The patient and her mother wanted esthetic improvement to these teeth.



**Figure 3**—The patient and parent agreed to try microabrasion of the central incisors, followed by infusion of an unfilled resin (Icon). The image above shows the teeth after application of the product components and hydrofluoric acid.

**Figure 4**—Photo of teeth Nos. 8 and 9 after infusion of the unfilled resin. While the result is significantly better, the parent, patient, and I were not satisfied with the result.



**Figures 5 and 6**—The patient and parent agreed to placing cosmetic direct veneers in a minimally invasive procedure. For this case, we chose to use Uvener (distributed by Ultradent). The first step involved determining the correct shape and size of Uvener for each tooth.



**Figure 7**—After selecting the appropriate shade using the VITA Shade system (Vident), we isolated using the Isolite System (Isolite) and cotton rolls.

**Figure 8**—For each tooth, BEAUTIFIL II (Shofu) was placed to mask the mottled area and cover the coronal portion of the tooth. A small amount of BEAUTIFIL Flow Plus 03 (Shofu) was then added to the Uvener template. This image shows the template being pressed onto the tooth and aligned with the long axis of the tooth, using the demarcation that runs gingival-incisal on the Uvener template.



**Figure 9**—The Uvener template was popped off and the area inspected.

**Figure 10**—Both veneers were cured, followed by trimming and polishing of the new restorations using medium and fine carbide composite trimming burs, Super Snap XTreme (Shofu) polishing discs, and OneGloss polishers (Shofu). This photo shows the esthetic final result.